



# **TRAIN TO TEACH WITH BILLERICAY EDUCATIONAL CONSORTIUM**

We are a well established initial Teacher Training provider offering Primary and Secondary courses of excellent quality.



---

# ABOUT US

We work with a large network of partnership schools in Essex and Havering who are passionate about training and developing outstanding and confident teachers. Schools design and deliver the programme reflecting on the real demands and challenges teachers face in the classroom.

We provide bespoke training of the highest quality and over the last five years 100% of our trainees have passed the course with Qualified Teacher Status (QTS) and gained a Post Graduate Certificate in Education (PGCE) with 60 Master credits.

The programme offers a real balance between hands on classroom experiences and the theory underpinning educational practice.

*A very strong sense of teamwork exists across the partnership. Schools are highly influential and involved in the future direction of the partnership*

Ofsted 2014



---

# WHY TRAIN WITH US?

- ▶ Extensive experience as an initial teacher training provider of 23 years rated 'Outstanding' by Ofsted
- ▶ A partnership of 50 schools offering diverse settings to provide you with the knowledge and experience to deal with the many different types of challenges you will face
- ▶ Pre-course induction following the interview day to fully prepare you for the course
- ▶ Experience in a school setting from the very start of your training developing you as a well rounded teaching professional
- ▶ Engaging workshops delivered by outstanding practicing teachers providing a wealth of resources to inspire pupils
- ▶ Experienced school mentors providing excellent guidance and support tailored to your specific needs to gain Qualified Teacher Status (QTS)
- ▶ Opportunities to experience different learning environments within the training year including Early Years, Special Schools, Pupil Referral Unit and schools with a large percentage of pupils with English as an additional language
- ▶ In addition to QTS, working in partnership with University College London (UCL) to gain a Post Graduate Certificate in Education academic award (60 Master credits)

*I enjoyed the course because the balance between workshops and school based sessions really helped me to prepare me for my NQT year. The tutors and mentors were all very supportive*

Trainee 2017

## Are you looking for:

- ▶ A life changing experience
- ▶ A new challenge
- ▶ A fulfilling career
- ▶ Every day to be different
- ▶ To work with pupils and make a difference to their lives?

## THEN WE HAVE THE COURSE FOR YOU!

WHY NOT COME AND MEET US AT ONE OF OUR TASTER DAYS OR DROP IN SESSIONS.  
A FULL LIST OF DATES CAN BE FOUND UNDER 'INFORMATION EVENTS' ON OUR WEBSITE

---

# PARTNERSHIP SCHOOLS

Trainees will be placed in a school for the majority of the course but will undertake a placement in another school during the spring term for a period of six weeks.

*Trainees are able to draw upon their high quality teaching experiences and the extensive range of behaviour management strategies learnt during their training*

Ofsted 2014



---

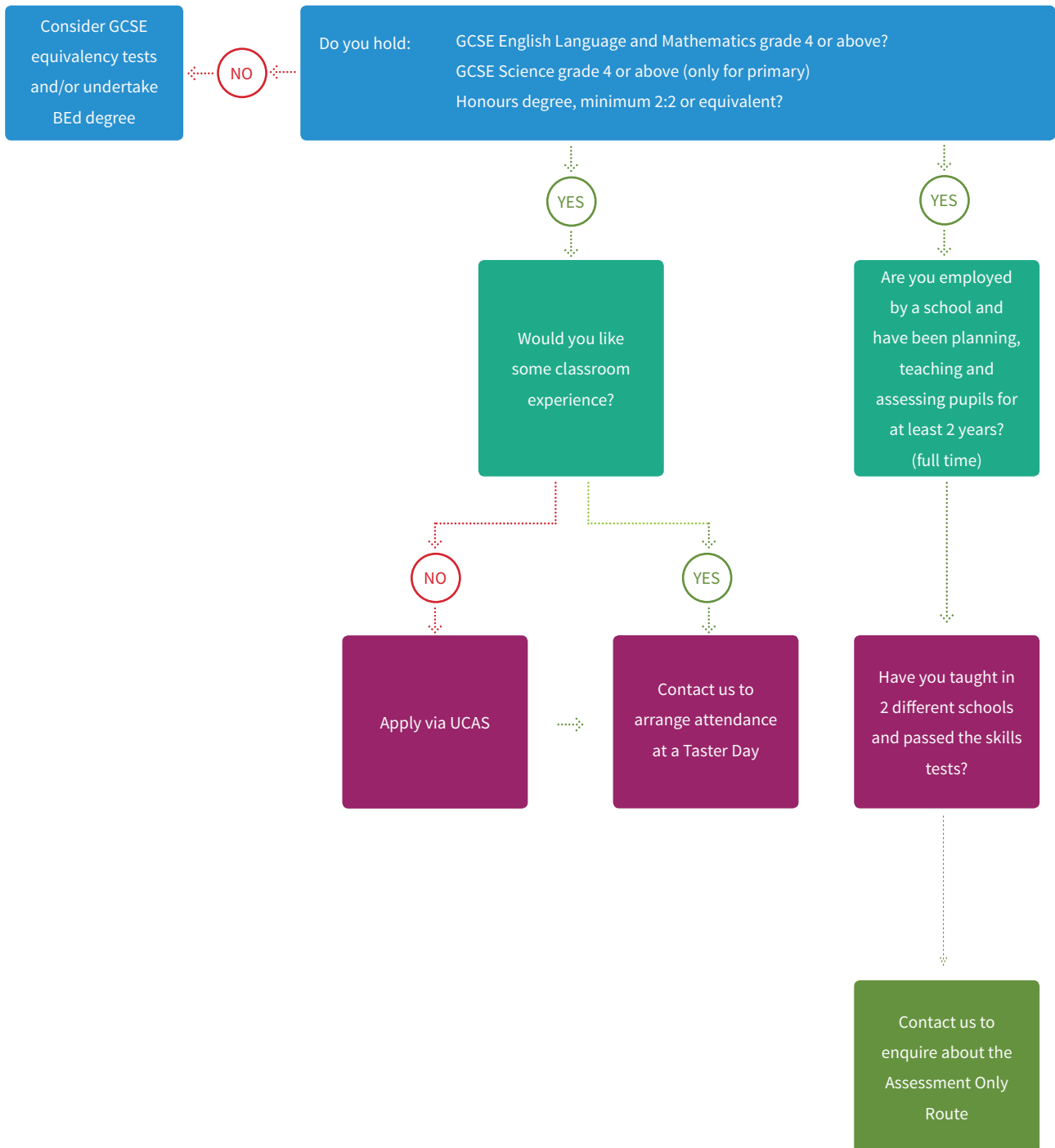
## Our Primary Schools :

- ▶ Benhurst Primary, Hornchurch
- ▶ Brightside Primary, Billericay
- ▶ Buttsbury Infant, Billericay
- ▶ Buttsbury Junior, Billericay
- ▶ Collingwood Primary, South Woodham Ferrers
- ▶ Columbus Special School, Chelmsford
- ▶ Downham C of E, Ramsden Heath
- ▶ Drapers' Maylands Primary, Harold Hill
- ▶ Elmwood Primary, South Woodham Ferrers
- ▶ Eversley Primary, Pitsea
- ▶ Grange Primary, Wickford
- ▶ Great Berry Primary, Langdon Hills
- ▶ Holy Family Catholic Primary, Witham
- ▶ Hutton All Saints, Hutton
- ▶ Ingatestone Infant, Ingatestone
- ▶ Ingatestone Junior, Ingatestone
- ▶ Ingrave Johnstone, Ingrave
- ▶ Kelvedon Hatch CP Primary, Brentwood
- ▶ Pioneer Special School, Basildon
- ▶ Pupil Referral Unit, Langdon Hills
- ▶ Quilters Infant, Billericay
- ▶ Quilters Junior, Billericay
- ▶ South Green Infant, Billericay
- ▶ South Green Junior, Billericay
- ▶ Stock C of E Primary, Stock
- ▶ Sunnymede Infant, Billericay
- ▶ Sunnymede Junior, Billericay
- ▶ St Joseph's RC Primary, South Woodham Ferrers
- ▶ St Peter's C of E Primary, Brentwood
- ▶ St Peter's RC Primary, Billericay

## Our Secondary Schools :

- ▶ Anglo European School, Ingatestone
- ▶ Beauchamps High School, Wickford
- ▶ Becket Keys C of E School, Brentwood
- ▶ Chelmer Valley High School, Chelmsford
- ▶ Chelmsford County High School, Chelmsford
- ▶ De La Salle School, Basildon
- ▶ Greensward Academy, Hockley
- ▶ King Edmund School, Rochford
- ▶ Mayflower High School, Billericay
- ▶ Moulsham High School, Chelmsford
- ▶ Ormiston Rivers Academy, Burnham on Crouch
- ▶ Sandon School, Chelmsford
- ▶ Shenfield High School, Brentwood
- ▶ Shoeburyness High School, Shoeburyness
- ▶ St Bernard's School, Westcliff on Sea
- ▶ The Billericay School, Billericay
- ▶ The Bromfords School & Sixth Form College, Wickford
- ▶ St John Payne Catholic School, Chelmsford
- ▶ Ursuline Convent School, Brentwood

# ROUTES INTO TEACHING



## Notes:

- ▶ 1 year QTS and PGCE course costs £9,000.00
- ▶ QTS only course costs £7,995.00
- ▶ Assessment only route costs £3,000.00

---

# SECONDARY PROGRAMME

## The fee paying route QTS with PGCE:

- ▶ Trainees qualify with QTS and PGCE (60 Master credits)
- ▶ QTS element delivered by BEC at Bromfords School, Wickford or local schools
- ▶ PGCE element delivered by UCL in London
- ▶ Every Thursday:
  - AM** : Professional Studies lectures, eg planning, behaviour management, special needs, assessment
  - PM** : subject professional studies: meeting with your lead subject mentor to discuss pedagogy and share best practices
- ▶ 140 days in school working with your subject mentor receiving feedback on your teaching
- ▶ Placements in 2 schools during the year plus experiences in different diverse settings
- ▶ Cost: £9,000.00
- ▶ Bursaries: up to £26,000.00 depending on subject and class of degree
- ▶ Can apply through UCAS using Billericay Educational Consortium or Billericay School (see page 9 table 1 and page 10 table 2)

## The fee paying route (QTS only):

- ▶ Trainees qualify with QTS only
- ▶ Workshops delivered at Bromfords School or local schools
- ▶ Every Thursday:
  - AM** : Professional Studies lectures, eg planning, behaviour management, special needs, assessment
  - PM** : subject professional studies: meeting with your lead subject mentor to discuss pedagogy and share best practices
- ▶ 140 days in school working with your subject mentor receiving feedback on your teaching
- ▶ Placements in 2 schools during the year plus experiences in different diverse settings
- ▶ Cost: £7,995.00
- ▶ Bursaries: up to £26,000.00 depending on subject and class of degree
- ▶ Can only apply through UCAS using Billericay Educational Consortium (see page 11 table 3)

*The level of coherence between the taught aspects of the course and school placements is excellent. This means all trainees are well supported to make rapid progress in becoming good and outstanding teachers*

Ofsted 2014





# SECONDARY

Billericay School offers fee paying places on behalf of a consortium of schools. The UCAS Provider Code is 1PT.

Type	Subject (UCAS Code)	UCAS Provider Code	Scholarships	Bursary for Trainee with 1st/PhD	Bursary for 2:1/Masters	Bursary for 2:2
Billericay School School Direct Fee Paying	Biology (28G4)	1PT		26,000	26,000	26,000
	Chemistry (28GK)	1PT	28,000	26,000	26,000	26,000
	Computing (28H7)	1PT	28,000	26,000	26,000	26,000
	Design & Technology (33HM)	1PT		12,000	9,000	0
	Drama (33HN)	1PT		0	0	0
	English (2CJG)	1PT		15,000	15,000	15,000
	Geography (28HW)	1PT	28,000	26,000	26,000	26,000
	History (28J2)	1PT		9,000	4,000	0
	*Mathematics (2CJH)	1PT	22,000	20,000	20,000	20,000
	Modern Languages (28JH)	1PT	28,000	26,000	26,000	26,000
QTS plus PGCE	Music (28JQ)	1PT		9,000	4,000	0
	Physics (28K4)	1PT	28,000	26,000	26,000	0
	Religious Education (33HL)	1PT		9,000	4,000	0
Cost: £9,000.00						

**Table 1**

## Scholarships

Graduates with a 2:1 and above, who are passionate about their subject and have the potential to be inspirational teachers can apply for a scholarship with the appropriate professional body. As well as the financial award, scholars will receive a package of additional benefits provided by the professional bodies.

Trainees with a 2:2 may, in exceptional circumstances, be awarded a scholarship if they have significant relevant experience. Trainees awarded a scholarship cannot also receive a bursary.

\*Secondary mathematics trainees will receive 2 additional early career payments of £5,000 each (£7,500 if teaching in specified areas of England) in their third and fifth year of teaching, if they have taught in state funded school in England since completing their teacher training course. These amounts are after tax, so teachers will receive the full amount as stated.

Billericay Educational Consortium offers fee paying places with the same consortium of schools. The UCAS Provider Code is B28, and the courses are as follows:

Type	Subject (UCAS Code)	UCAS Provider Code	Scholarships	Bursary for Trainee with 1st/PhD	Bursary for 2:1/Masters	Bursary for 2:2
Core SCITT QTS plus PGCE Cost: £9,000.00	Biology (2KN2)	B28		26,000	26,000	26,000
	Chemistry (2KN4)	B28	28,000	26,000	26,000	26,000
	Computing (2KN5)	B28	28,000	26,000	26,000	26,000
	Design & Technology (2QY5)	B28		12,000	9,000	0
	Drama (2QXZ)	B28		0	0	0
	English (2KN6)	B28		15,000	15,000	15,000
	Geography (2KN7)	B28	28,000	26,000	26,000	26,000
	History (2KN8)	B28		9,000	4,000	0
	Mathematics (2KN9)	B28	22,000	20,000	20,000	20,000
	Modern Languages (2KNC)	B28	28,000	26,000	26,000	26,000
	Music (2KND)	B28		9,000	4,000	0
	Physics (2KNG)	B28	28,000	26,000	26,000	0
	Religious Education (37H2)	B28		9,000	4,000	0

**Table 2**

Billericay Educational Consortium also offers a QTS only course, details as follows:

Type	Subject (UCAS Code)	UCAS Provider Code	Scholarships	Bursary for Trainee with 1st/PhD	Bursary for 2:1/Masters	Bursary for 2:2
Core SCITT QTS only Cost: £7,995.00	Biology (37VJ)	B28		26,000	26,000	26,000
	Chemistry (37VK)	B28	28,000	26,000	26,000	26,000
	Computing (36T8)	B28	28,000	26,000	26,000	26,000
	Design & Technology (36T7)	B28		12,000	9,000	0
	Drama (36T6)	B28		0	0	0
	English (36T5)	B28		15,000	15,000	15,000
	Geography (36T3)	B28	28,000	26,000	26,000	26,000
	History (36SX)	B28		9,000	4,000	0
	Mathematics (36SV)	B28	22,000	20,000	20,000	20,000
	Modern Languages (36SR)	B28	28,000	26,000	26,000	26,000
	Music (36SP)	B28		9,000	4,000	0
	Physics (36SM)	B28	28,000	26,000	26,000	0
	Religious Education (36SF)	B28		9,000	4,000	0

**Table 3**

---

# PRIMARY PROGRAMME

## The fee paying route QTS with PGCE:

- ▶ Trainees qualify with QTS and PGCE (60 Master credits)
- ▶ QTS element delivered by BEC at Bromfords School, Wickford or local schools
- ▶ PGCE element delivered by UCL in London

### Workshops at Bromfords School cover:

- ▶ English
- ▶ Mathematics
- ▶ Science
- ▶ Computer Science
- ▶ Geography
- ▶ History
- ▶ Music
- ▶ Art
- ▶ Design and Technology
- ▶ PE
- ▶ PSHE
- ▶ RE
- ▶ SMSC

### Workshops at Bromfords School cover:

- ▶ Child Development
- ▶ Planning
- ▶ Assessment
- ▶ Behaviour Management
- ▶ Special Educational Needs
- ▶ Wellbeing
- ▶ Teacher and the Law
- ▶ Voice Care
- ▶ English as an additional language
- ▶ 126 days in school working with your class mentor receiving feedback on your teaching
- ▶ Placements in 2 schools during the year plus experiences in different diverse settings
- ▶ Cost: £9,000.00
- ▶ Bursaries: NIL
- ▶ Can apply through UCAS using Billericay Educational Consortium or Billericay School (see page 14 table 4 and 5)

---

## The fee paying route (QTS only):

- ▶ Trainees qualify with QTS only
- ▶ Workshops delivered at Bromfords School or local schools

### Workshops at Bromfords School cover:

- ▶ English
- ▶ Mathematics
- ▶ Science
- ▶ Computer Science
- ▶ Geography
- ▶ History
- ▶ Music
- ▶ PE
- ▶ PSHE
- ▶ RE
- ▶ SMSC

### Professional Studies including:

- ▶ Child Development
- ▶ Planning
- ▶ Assessment
- ▶ Behaviour Management
- ▶ Special Educational Needs
- ▶ Wellbeing
- ▶ Teacher and the Law
- ▶ Voice Care
- ▶ English as an additional language
- ▶ Placements in 2 schools during the year plus experiences in different diverse settings
- ▶ Cost: £7,995.00
- ▶ Bursaries: NIL
- ▶ Can only apply through UCAS using Billericay Educational Consortium (see page 14 table 6)

# PRIMARY

Buttsbury Infant School offers fee paying places on behalf of a consortium of schools. The UCAS Provider Code is 1PV.

Type	Subject (UCAS Code)	UCAS Provider Code	Scholarships	Bursary for Trainee with 1st/PhD	Bursary for 2:1/Masters	Bursary for 2:2
Buttsbury Infant School Direct Fee Paying QTS plus PGCE Cost: £9,000.00	Primary (29PN)	1PV		NIL	NIL	NIL

**Table 4**

Billericay Educational Consortium offers fee paying places with the same consortium of schools. The UCAS Provider Code is B28, and the courses are as follows:

Type	Subject (UCAS Code)	UCAS Provider Code	Scholarships	Bursary for Trainee with 1st/PhD	Bursary for 2:1/Masters	Bursary for 2:2
Core SCITT QTS plus PGCE Cost: £9,000.00	Primary (X100)	B28		NIL	NIL	NIL

**Table 5**

Billericay Educational Consortium also offers a QTS only course, details as follows:

Type	Subject (UCAS Code)	UCAS Provider Code	Scholarships	Bursary for Trainee with 1st/PhD	Bursary for 2:1/Masters	Bursary for 2:2
Core SCITT QTS only Cost: £7,995.00	Primary (36S7)	B28		NIL	NIL	NIL

**Table 6**

## How do I apply for a place?

**1.** Firstly check you meet the entry requirements:

- ▶ GCSE grade C (or grade 4) in English Language and Mathematics or a recognised equivalent. If applying for primary you will also need GCSE grade C (or grade 4) in Science
- ▶ Minimum 2:2 honours degree from a UK university or a recognised equivalent qualification. For secondary, if your degree is in a different subject to the one you wish to teach, you will require an A level in that subject

**2.** Applicants with non-British qualifications

If you hold a degree or other qualification from a non-UK institution, you must verify their equivalence through the National Recognition Information Centre for the UK (UK NARIC), tel: 01242 260010.

You will need to supply written evidence of this equivalency with your application.

**3.** Applicants who do not hold English, Mathematics or Science (primary only) GCSE grade C (or grade 4), or a recognised equivalent, you will need to apply to take an equivalency test. We accept equivalency tests from:

- ▶ A\* Star Teachers – tel: (020) 7272 7070, and
- ▶ Equivalency Testing – tel: 01277 203336 ([www.equivalencytesting.co.uk](http://www.equivalencytesting.co.uk))

A pass in these tests will be acknowledged as being equivalent to grade C or above at GCSE/GCEO-level.

**4.** If you are looking to gain classroom experience look under Event Information on our website to see when we are holding our next taster day for you to join us.

**5.** Apply using UCAS ([www.ucas.com/apply/teacher-training](http://www.ucas.com/apply/teacher-training)), refer to pages 9, 10 and 11 for the relevant course code. UCAS give advice on their website on what to include within your personal statement.

**6.** Once we receive your application from UCAS a decision will be made whether to invite a candidate for interview. All our interviews will be held in one of our partner schools.

On the interview day you will be asked to:

- ▶ deliver a 10 minute presentation on an aspect of learning which is either misunderstood by pupils or difficult to teach
- ▶ complete a written task reflecting on a lesson that you have observed a teacher deliver
- ▶ undertake a formal interview

In addition, applicants for the primary course will:

- ▶ undertake a numeracy and literacy task
- ▶ deliver a 10 minute creative activity of their own choice.

**7.** Successful candidates will be offered a place within 24 hours of the interview day. The offer letter will detail any conditions.

All trainees offered a place must:

- ▶ pass the literacy and numeracy professional skills tests
- ▶ pass a Fitness to Teach medical assessment
- ▶ undergo an enhanced DBS check to verify their suitability to work with young people

## Qualities we are looking for:

- ▶ Enthusiastic about teaching
- ▶ Energetic and hardworking
- ▶ Positive outlook
- ▶ Resilient nature
- ▶ Imaginative and creative
- ▶ Ability to inspire and enthuse
- ▶ Well organised, focused and determined
- ▶ Ability to work in a team and with other adults
- ▶ Ability to reflect, listen and always willing to act on advice
- ▶ Ability to use initiative
- ▶ Adaptable and flexible

## Subject Knowledge Enhancement Courses (secondary only)

For specific subjects, we offer through a provider Subject Knowledge Enhancement courses of varying lengths to bring you up to speed. These programmes are online, giving you the flexibility to undertake your studies in your own time. We want to provide every opportunity to ensure you are fully prepared to start the course.

## Individual Development Plan (IDP)

After the interview day we compile an IDP and meet with you to discuss your strengths and areas requiring further development as identified on the interview day. We also provide you with tasks to ensure you have every opportunity to develop your knowledge and skills in readiness for the beginning of the course.



*You will be immersed in school life from day one. You will be learning new things every minute of every day and the pace is fast. There is fantastic support to move you on to becoming an outstanding teacher*

Trainee 2016

### Assessment Only Route (QTS only):

- ▶ Applicants qualify with QTS only
- ▶ Applicants are employed by a school
- ▶ Applicants have been teaching for 2 years (including planning, teaching and assessing pupils)
- ▶ Headteacher confirms applicant consistently delivers lessons at a good or better level and is meeting all the Teachers' Standards
- ▶ No lectures provided, as applicant has the required subject knowledge
- ▶ Assessment is teaching for 12 consecutive weeks
- ▶ Before the assessment period begins, applicants need to have taught in 2 schools and across 2 key stages, passed both skills tests and have clear DBS and health checks
- ▶ Cost: £3,000.00 - No bursary available

*The level of coherence between the taught aspects of the course and school placements is excellent. This means all trainees are well supported to make rapid progress in becoming good and outstanding teachers*

Ofsted 2014

## *The best preparation I could have had for doing a Teacher Training Programme*

Trainee 2017

### How am I assessed?

During the course, trainees are continually assessed against the Teachers' Standards in the following ways:

- ▶ Through observation of lessons during school practices
- ▶ Through examination of the trainee's professional development portfolio, including subject knowledge audits, lesson plans and portal evidence
- ▶ Through written assignments and assessment tasks

There is a formal review of the trainee's progress regularly at the end of each term.

The final assessment towards the award of QTS takes place in the third term and takes into account the evidence provided by the previous reviews.

To gain a PGCE, trainees need to:

- ▶ enrol with UCL (organised by BEC)
- ▶ be awarded QTS
- ▶ pass the two written assignments set by UCL

*The staff were so welcoming and I learnt so much.  
Working with children every day has really helped  
me make the decision to teach*

Trainee 2017

### What happens after my training year?

Your training with us does not stop. We work in collaboration with the [Billericay Teaching School Alliance](#) to provide Continuing Professional Development courses throughout your teaching career.

We arrange meetings for you to attend to discuss challenges and share best practices with your peers, and with us.

We aim to provide the next steps and support you in achieving promotion.

## What makes our course outstanding?

We know what makes an outstanding trainee. We have designed a programme which reflects the needs of the modern classroom. Every trainee is an individual and we aim to meet their particular needs through an inspiring training experience which will provide strong foundations for you to build upon.


**APPLY FOR A PLACE AND BE THAT INSPIRATION FOR  
OUR FUTURE GENERATIONS**





**BILLERICAY  
EDUCATIONAL  
CONSORTIUM**

 @BillericaySCITT

 BillericayEdConsortium

[www.billericayscitt.com](http://www.billericayscitt.com)

