



TRAIN TO TEACH WITH BILLERICAY EDUCATIONAL CONSORTIUM

We are a well established and supportive Initial Teacher Training provider offering Primary and Secondary courses of excellent quality.



ABOUT US

We work with a large network of partnership schools in Essex and Havering who are passionate about training and developing outstanding and confident teachers. Schools design and deliver the programme reflecting on the real demands and challenges teachers face in the classroom.

We provide bespoke training of the highest quality and over the last five years 100% of our trainees have passed the course with Qualified Teacher Status (QTS) and gained a Post Graduate Certificate in Education (PGCE) with 60 Master credits.

The programme offers a real balance between hands on classroom experiences and the theory underpinning educational practice.

A very strong sense of teamwork exists across the partnership. Schools are highly influential and involved in the future direction of the partnership

Ofsted



WHY TRAIN WITH US?

- ▶ In addition to QTS, the opportunity to work in partnership with University of Suffolk (UoS) to gain a Post Graduate Certificate in Education academic award (60 Master credits)
- ▶ Extensive experience as an initial teacher training provider of 25 years rated 'Outstanding' by Ofsted
- ▶ A partnership of 50 schools offering diverse settings to provide you with the knowledge and experience to deal with the many different types of challenges you will face
- ▶ Pre-course induction following the interview day to fully prepare you for the course
- ▶ Experience in a school setting from the very start of your training developing you as a well rounded teaching professional
- ▶ Engaging workshops delivered by outstanding practicing teachers providing a wealth of resources to inspire pupils
- ▶ Experienced school mentors providing excellent guidance and support tailored to your specific needs to gain QTS and PGCE
- ▶ Opportunities to experience different learning environments within the training year including Early Years, Special Schools, Pupil Referral Unit and schools with a large percentage of pupils with English as an additional language
- ▶ Secondary part time courses to provide a flexible training option

I enjoyed the course because the balance between workshops and school based sessions really helped me to prepare me for my NQT year. The tutors and mentors were all very supportive

Trainee 2019

Are you looking for:

- ▶ A life changing experience
- ▶ A new challenge
- ▶ A fulfilling career
- ▶ Every day to be different
- ▶ To work with pupils and make a difference to their lives?

THEN WE HAVE THE COURSE FOR YOU!

WHY NOT COME AND MEET US AT ONE OF OUR TASTER DAYS, DROP IN SESSIONS OR JUST DROP IN TO OUR WICKFORD OFFICE. A FULL LIST OF DATES CAN BE FOUND UNDER 'INFORMATION EVENTS' ON OUR WEBSITE

PARTNERSHIP SCHOOLS

Trainees will be placed in one school for the majority of the course but will undertake a placement in another school during the spring term for a period of six weeks. If a trainee wishes to train in a particular school we can initiate discussions with the headteacher.

Trainees are able to draw upon their high quality teaching experiences and the extensive range of behaviour management strategies learnt during their training

Ofsted



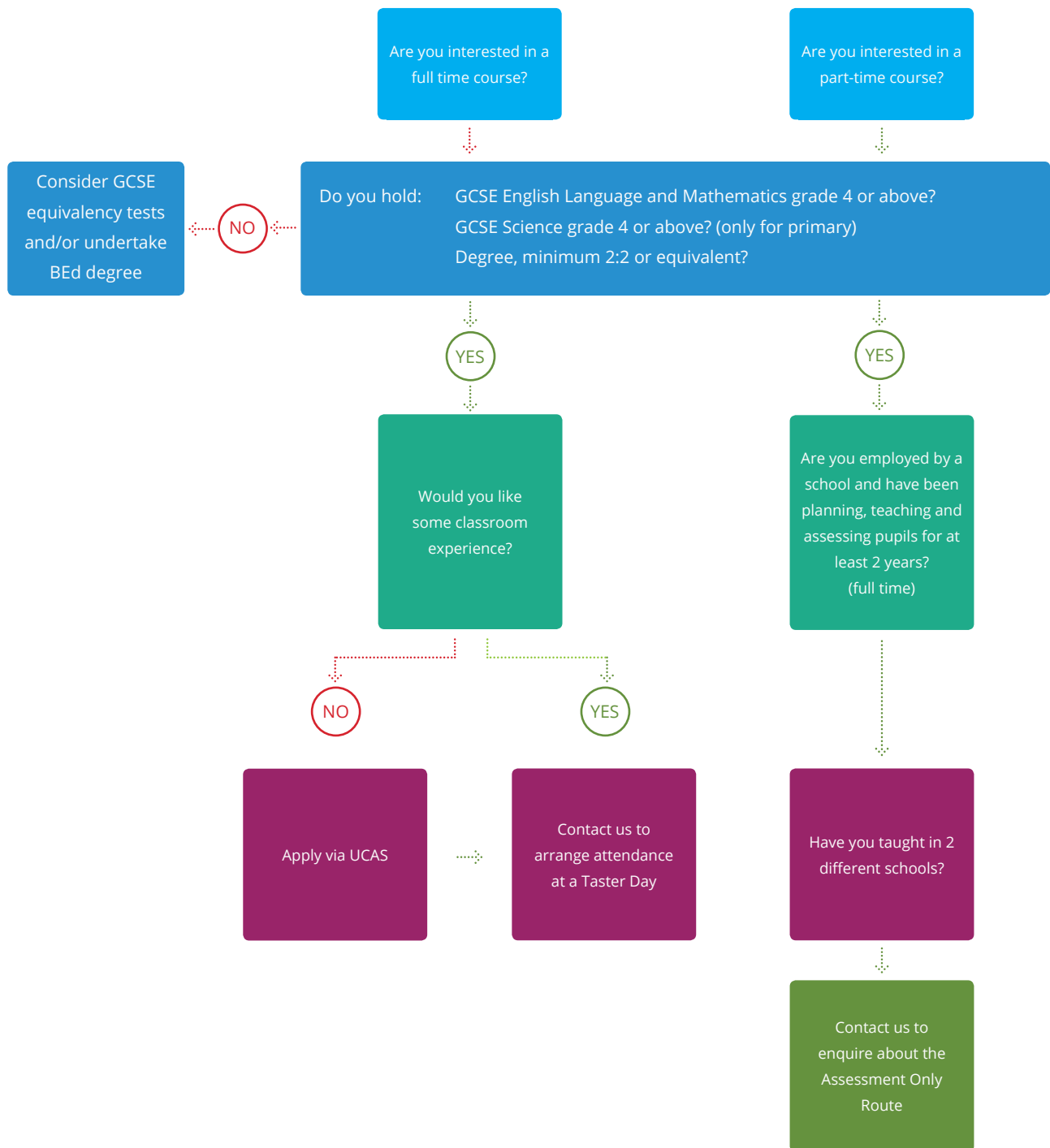
Our Primary Schools :

- ▶ Benhurst Primary, Hornchurch
- ▶ Brightside Primary, Billericay
- ▶ Buttsbury Infant, Billericay
- ▶ Buttsbury Junior, Billericay
- ▶ Collingwood Primary, South Woodham Ferrers
- ▶ Columbus Special School, Chelmsford
- ▶ Drapers' Maylands Primary, Harold Hill
- ▶ Elmwood Primary, South Woodham Ferrers
- ▶ Eversley Primary, Pitsea
- ▶ Grange Primary, Wickford
- ▶ Great Berry Primary, Langdon Hills
- ▶ Holy Family Catholic Primary, Witham
- ▶ Holt Farm Infants, Rochford
- ▶ Ingatestone Infant, Ingatestone
- ▶ Ingatestone Junior, Ingatestone
- ▶ Ingrave Johnstone, Ingrave
- ▶ Janet Duke Primary, Basildon
- ▶ Pioneer Special School, Basildon
- ▶ Pupil Referral Unit, Langdon Hills
- ▶ Quilters Infant, Billericay
- ▶ Quilters Junior, Billericay
- ▶ South Green Infant, Billericay
- ▶ South Green Junior, Billericay
- ▶ Stock C of E Primary, Stock
- ▶ Sunnymede Infant, Billericay
- ▶ Sunnymede Junior, Billericay
- ▶ St Francis Catholic Primary, Maldon
- ▶ St Joseph's RC Primary, South Woodham Ferrers
- ▶ St Peter's C of E Primary, Brentwood
- ▶ St Peter's RC Primary, Billericay
- ▶ Trinity St Mary's C of E Primary, South Woodham Ferrers

Our Secondary Schools :

- ▶ Anglo European School, Ingatestone
- ▶ Beauchamps High School, Wickford
- ▶ Becket Keys C of E School, Brentwood
- ▶ Chelmer Valley High School, Chelmsford
- ▶ Chelmsford County High School, Chelmsford
- ▶ De La Salle School, Basildon
- ▶ FitzWimarc School, Rayleigh
- ▶ Greensward Academy, Hockley
- ▶ King Edmund School, Rochford
- ▶ Mayflower High School, Billericay
- ▶ Moulsham High School, Chelmsford
- ▶ Ormiston Rivers Academy, Burnham on Crouch
- ▶ Sandon School, Chelmsford
- ▶ Shenfield High School, Brentwood
- ▶ Shoeburyness High School, Shoeburyness
- ▶ St Bernard's School, Westcliff on Sea
- ▶ St John Payne Catholic School, Chelmsford
- ▶ The Billericay School, Billericay
- ▶ The Boswells School, Chelmsford
- ▶ The Bromfords School & Sixth Form College, Wickford
- ▶ Ursuline Convent School, Brentwood

ROUTES INTO TEACHING



Notes:

- ▶ 1 year QTS and PGCE course costs £9,000
- ▶ QTS only course costs £7,995
- ▶ Assessment only route costs £3,000
- ▶ Part time QTS 2 year course costs £5,500 per year

SECONDARY PROGRAMME

The fee paying route QTS with PGCE:

- ▶ Trainees qualify with QTS and PGCE (60 Master credits, validated by University of Suffolk)
- ▶ QTS and PGCE elements delivered by BEC at Bromfords School, Wickford or local schools
- ▶ Every Thursday:
 - AM : Professional Studies lectures, eg planning, behaviour management, special needs, assessment
 - PM : subject professional studies: meeting with your lead subject mentor to discuss pedagogy and share best practices
- ▶ 140 days in school working with your subject mentor receiving feedback on your teaching
- ▶ Placements in 2 schools during the year plus experiences in different diverse settings
- ▶ Cost: £9,000.00
- ▶ Bursaries: up to £26,000.00 depending on subject and class of degree
- ▶ Apply through UCAS using Billericay Educational Consortium or Billericay School (see page 10 tables 1, 2 and 3)

The fee paying route QTS only:

- ▶ Trainees qualify with QTS only
- ▶ Workshops delivered at Bromfords School or local schools
- ▶ Every Thursday:
 - AM : Professional Studies lectures, eg planning, behaviour management, special needs, assessment
 - PM : subject professional studies: meeting with your lead subject mentor to discuss pedagogy and share best practices
- ▶ 140 days in school working with your subject mentor receiving feedback on your teaching
- ▶ Placements in 2 schools during the year plus experiences in different diverse settings
- ▶ Cost: £7,995
- ▶ Bursaries: up to £26,000 depending on subject and class of degree
- ▶ Apply through UCAS using Billericay Educational Consortium (see page 10 table 3)

Part-time Course

- ▶ Training spread over 2 years, 3 days each week during term time
- ▶ 1st year every Thursday:
 - AM : Professional Studies lectures, eg planning, behaviour management, special needs, assessment
 - PM : subject professional studies: meeting with your lead subject mentor to discuss pedagogy and share best practices
- ▶ Trainees qualify with QTS
- ▶ QTS delivered by BEC at Bromfords School, Wickford or local schools
- ▶ Placements in 1 school during first year and a different school in year 2
- ▶ Cost £11,000 (£5,500 per year)
- ▶ Apply through UCAS using Billericay Educational Consortium (see page 10 table 3)

The level of coherence between the taught aspects of the course and school placements is excellent. This means all trainees are well supported to make rapid progress in becoming good and outstanding teachers

Ofsted



FULL TIME SECONDARY Courses for 2020/21

Postgraduate bursaries and scholarships for secondary subjects

	Scholarship	Bursary (Trainee with 1st, 2:1, 2:2, PhD or Master's)
Chemistry, computing, languages, mathematics and physics	£ 28,000	£ 26,000
Biology and classics	No scholarship available	£ 26,000
Geography	£ 17,000	£ 15,000
Design & Technology	No scholarship available	£ 15,000
English	No scholarship available	£ 12,000
Art and design, business studies, history, music and religious education	No scholarship available	£ 9,000

Graduates with a 2:1 and above can apply for a scholarship with the appropriate professional body. As well as the financial award, scholars will receive a package of additional benefits provided by the professional bodies.

Trainees with a 2:2 may be awarded a scholarship in exceptional circumstances, if they have significant relevant experience.

Trainees awarded a scholarship cannot also receive a bursary. Trainees who are not awarded a scholarship may be eligible for a bursary, if they meet the eligibility criteria.

Early-career payments: chemistry, languages, mathematics and physics

Chemistry, languages, mathematics and physics trainees will receive 3 additional early-career payments of £2,000 each (or £3,000 each if teaching in specified areas of England) in their second, third and fourth year of teaching, if they have taught in a state funded school in England since completing their teacher training course. These amounts are after tax, so teachers will receive the full amount as stated.

Billericay School offers School Direct tuition-fee places on behalf of a consortium of schools. Training will be provided by Billericay Educational Consortium in collaboration with your placement school.

School Direct (Billericay School) Provider Code 1PT		UCAS Course Code
	Subject	
	Biology	28G4
	Chemistry	28GK
	Computing	28H7
	Design & Technology	33HM
	Drama	33HN
	English	2CJG
	Geography	28HW
	History	28J2
	Mathematics	2CJH
	Modern Languages	28JH
	Music	28JQ
	Physics	28K4
	Religious Education	3CZF

QTS plus PGCE
Cost: £9,000

Table 1

Billericay Educational Consortium also offers tuition-fee places with the same consortium of schools, details as follows:

Billericay Educational Consortium Provider Code B28		UCAS Course Code	
	Subject	Full-time	
	Biology	2KN2	
	Business Studies with Economics	AT79	
	Chemistry	2KN4	
	Computing	2KN5	
QTS plus PGCE	Design & Technology	2QY5	
	Drama	2QXZ	
Cost:	English	2KN6	
Full-time: £9,000	Geography	2KN7	
	History	2KN8	
	Mathematics	2KN9	
	Modern Languages	2KNC	
	Music	2KND	
	Physics	2KNG	
	Religious Education	37H2	

Table 2

Billericay Educational Consortium Provider Code B28		UCAS Course Code		
	Subject	Full-time	Part-time	
	Biology	37VJ	N/A	
	Business Studies with Economics	K699	AL09	
	Chemistry	37VK	AL10	
	Computing	36T8	AL11	
QTS only	Design & Technology	36T7	AL12	
	Drama	36T6	AL13	
Full-time: £7,995	English	36T5	AL14	
Part-time: £11,000 (£5,500 per year)	Geography	36T3	N/A	
	History	36SX	N/A	
	Mathematics	36SV	AL15	
	Modern Languages	36SR	AL16	
	Music	36SP	N/A	
	Physics	36SM	AL17	
	Religious Education	36SF	N/A	

Table 3

PRIMARY PROGRAMME (Full time only)

The tuition-fee route QTS with PGCE:

- ▶ Trainees qualify with QTS and PGCE (60 Master credits, validated by University of Suffolk)
- ▶ QTS and PGCE elements are delivered by BEC at Bromfords School, Wickford or local schools

Workshops at Bromfords School cover:

- ▶ English
- ▶ Mathematics
- ▶ Science
- ▶ Computer Science
- ▶ Geography
- ▶ History
- ▶ Music
- ▶ Art
- ▶ Design and Technology
- ▶ PE
- ▶ PSHE
- ▶ RE
- ▶ SMSC

Workshops at Bromfords School cover:

- ▶ Child Development
- ▶ Planning
- ▶ Assessment
- ▶ Behaviour Management
- ▶ Special Educational Needs
- ▶ Wellbeing
- ▶ Teacher and the Law
- ▶ Voice Care
- ▶ English as an additional language
- ▶ 126 days in school working with your class mentor receiving feedback on your teaching
- ▶ Placements in 2 schools during the year plus experiences in different diverse settings
- ▶ Cost: £9,000
- ▶ Bursaries: NIL
- ▶ Apply through UCAS using Billericay Educational Consortium or Buttsbury Infant School (see page 13 table 4 and 5)

The tuition-fee route (QTS only):

- ▶ Trainees qualify with QTS only
- ▶ Workshops delivered at Bromfords School or local schools

Workshops at Bromfords School cover:

- ▶ English
- ▶ Mathematics
- ▶ Science
- ▶ Computer Science
- ▶ Geography
- ▶ History
- ▶ Music
- ▶ PE
- ▶ PSHE
- ▶ RE
- ▶ SMSC

Professional Studies including:

- ▶ Child Development
- ▶ Planning
- ▶ Assessment
- ▶ Behaviour Management
- ▶ Special Educational Needs
- ▶ Wellbeing
- ▶ Teacher and the Law
- ▶ Voice Care
- ▶ English as an additional language
- ▶ Placements in 2 schools during the year plus experiences in different diverse settings
- ▶ Cost: £7,995
- ▶ Bursaries: NIL
- ▶ Apply through UCAS using Billericay Educational Consortium (see page 13 table 5)

PRIMARY

Here is a list of how you can apply for a place on our primary course.

Buttsbury Infant School offers School Direct tuition-fee places on behalf of a consortium of schools. Training will be provided by Billericay Educational Consortium in collaboration with your placement school.

School Direct (Buttsbury Infants) Provider Code 1PV	Subject	UCAS Course Code	Bursary
QTS plus PGCE Cost: £9,000	Primary	29PN	Nil

Table 4

Billericay Educational Consortium also offers tuition-fee places with the same consortium of schools, details as follows:

Billericay Educational Consortium Provider Code B28	Subject	UCAS Course Code	Bursary
QTS plus PGCE Cost: £9,000	Primary	X100	Nil
QTS only Cost: £7,995	Primary	36S7	Nil

Table 5

How do I apply for a place?

1. Firstly check you meet the entry requirements:

- ▶ GCSE grade C (or grade 4) in English Language and Mathematics or a recognised equivalent. If applying for primary you will also need GCSE grade C (or grade 4) in Science
- ▶ Minimum 2:2 degree from a UK university or a recognised equivalent qualification. For secondary, if your degree is in a different subject to the one you wish to teach, you will require an A level in that subject

2. Applicants with non-British qualifications

If you hold a degree or other qualification from a non-UK institution, you must verify their equivalence through the National Recognition Information Centre for the UK (UK NARIC), tel: 01242 260010.

You will need to supply written evidence of this equivalency with your application.

3. Applicants who do not hold English, Mathematics or Science (primary only) GCSE grade C (or grade 4), or a recognised equivalent, will need to apply to take an equivalency test. We accept equivalency tests from:

- ▶ A* Star Teachers – tel: (020) 7272 7070, and
- ▶ Equivalency Testing – tel: 01277 203336 (www.equivalencytesting.co.uk)

A pass in these tests will be acknowledged as being equivalent to grade C or above at GCSE level.

4. If you are looking to gain classroom experience or just wanting a chat to find out more about our course, look under “Event Information” on our website to see when we are holding our next taster day or you can visit our office in Wickford when convenient to you. Please ring 01268 477 611 - Ext. 472 (Primary) or 476 (Secondary).

5. Apply using UCAS (www.ucas.com/apply/teacher-training), refer to pages 10 and 13 for the relevant course code. UCAS give advice on their website on what to include within your personal statement.

6. Once we receive your application from UCAS a decision will be made whether to invite a candidate for interview. All our interviews will be held in one of our partner schools.

On the interview day you will be asked to:

- ▶ deliver a 10 minute presentation on why you want to be a teacher
- ▶ complete a written task reflecting on a lesson that you have observed a teacher deliver
- ▶ undertake a formal interview

7. Successful candidates will be offered a place within 24 hours of the interview day. The offer letter will detail any conditions. All trainees offered a place must:

- ▶ pass a Fitness to Teach medical assessment
- ▶ undergo an enhanced DBS check to verify their suitability to work with young people

Qualities we are looking for:

- ▶ Effective communication skills
- ▶ Ability to develop positive working relationships with children
- ▶ Strong subject knowledge (secondary)
- ▶ Enthusiastic about teaching
- ▶ Energetic and hardworking
- ▶ Positive outlook
- ▶ Resilient nature
- ▶ Imaginative and creative
- ▶ Ability to inspire and enthuse
- ▶ Well organised, focused and determined
- ▶ Ability to work in a team and with other adults
- ▶ Ability to reflect, listen and always willing to act on advice
- ▶ Ability to use initiative
- ▶ Adaptable and flexible

Subject Knowledge Enhancement Courses (secondary only)

For specific subjects, we offer through a provider Subject Knowledge Enhancement courses of varying lengths to bring you up to speed. These programmes are online, giving you the flexibility to undertake your studies in your own time. We want to provide every opportunity to ensure you are fully prepared to start the course.

Individual Development Plan (IDP)

After the interview day we compile an IDP and meet with you to discuss your strengths and areas requiring further development as identified on the interview day. We also provide you with tasks to ensure you have every opportunity to develop your knowledge and skills in readiness for the beginning of the course.

You will be immersed in school life from day one. You will be learning new things every minute of every day and the pace is fast. There is fantastic support to move you on to becoming an outstanding teacher

Trainee 2019

Assessment Only Route (QTS only):

- ▶ Applicants qualify with QTS only
- ▶ Applicants are employed by a school
- ▶ Applicants have been teaching full time for 2 years (including planning, teaching and assessing pupils)
- ▶ Headteacher confirms applicant consistently delivers lessons at a good or better level and is meeting all the Teachers' Standards
- ▶ No lectures provided, as applicant has the required subject knowledge
- ▶ Assessment is teaching for 12 consecutive weeks
- ▶ Before the assessment period begins, applicants need to have taught in 2 schools and across 2 key stages, and have clear DBS and health checks
- ▶ Cost: £3,000 - No bursary available

The level of coherence between the taught aspects of the course and school placements is excellent. This means all trainees are well supported to make rapid progress in becoming good and outstanding teachers

Ofsted

The best preparation I could have had for doing a Teacher Training Programme

Trainee 2019

How am I assessed?

During the course, trainees are continually assessed against the Teachers' Standards in the following ways:

- ▶ Through observation of lessons during school practices
- ▶ Through examination of the trainee's professional development portfolio, including subject knowledge audits, lesson plans and portal evidence
- ▶ Through written assignments and assessment tasks

There is a formal review of the trainee's progress regularly at the end of each term.

The final assessment towards the award of QTS takes place in the final term and takes into account the evidence provided by the previous reviews.

To gain a PGCE (validated by University of Suffolk), trainees need to:

- ▶ Be awarded QTS
- ▶ Pass two written assignments at Masters level. We provide excellent support for you to pass these assignments

*The staff were so welcoming and I learnt so much.
Working with children every day has really helped
me make the decision to teach*

Trainee 2019

What happens after my training year?

Your training with us does not stop. We work in collaboration with the [Billericay Teaching School Alliance](#) to provide Continuing Professional Development courses during your 2 years induction period, and throughout your teaching career.

We arrange meetings for you to attend to discuss challenges and share best practices with your peers, and with us.

We aim to provide the next steps and support you in achieving promotion.

What makes our course outstanding?

We know what makes an outstanding trainee. We have designed a programme which reflects the needs of the modern classroom. Every trainee is an individual and we aim to meet their particular needs through an inspiring training experience which will provide strong foundations for you to build upon.

APPLY FOR A PLACE AND BE THAT INSPIRATION FOR
OUR FUTURE GENERATIONS





**BILLERICAY
EDUCATIONAL
CONSORTIUM**



@BillericaySCITT



BillericayEdConsortium



**University
of Suffolk**

www.billericayscitt.com

